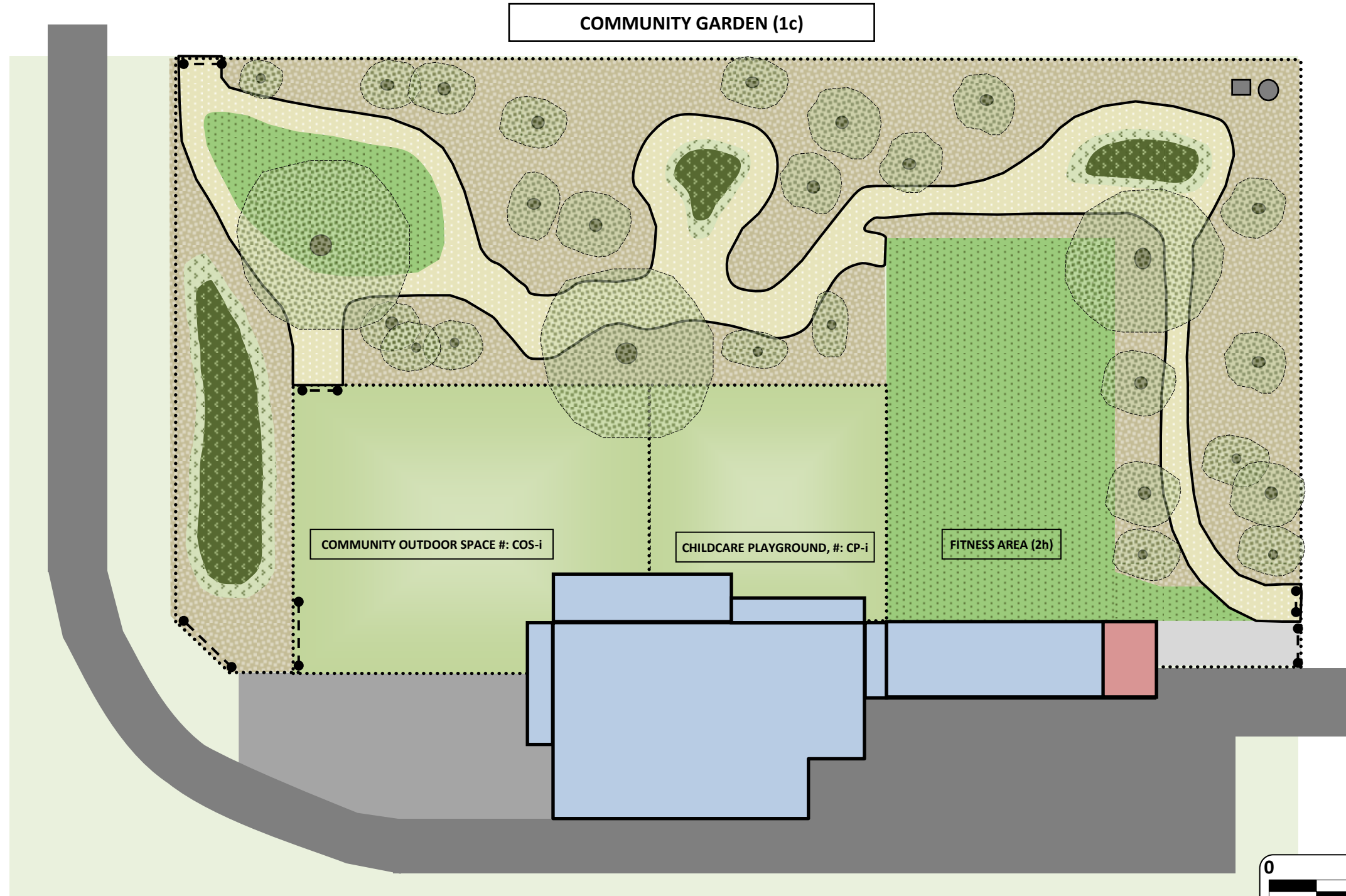


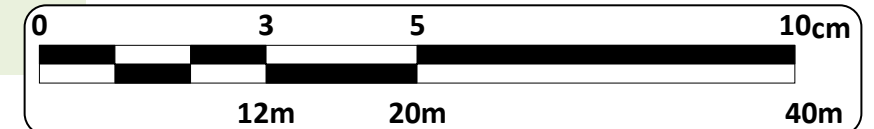
Clark st entrance



KEY

- MULCH/GROUND COVER
- FENCING
- GATE
- CRUSH GRANIT PATH
- BUILDINGS
- DRIVEWAY
- GRASSED AREA
- CONCRETED AREA
- TREES/BUSHES
- SHRUBS/GROUND COVER
- MAN HOLES
- GROUNDS KEEPING STORAGE

Jimbour st entrance



PLANT LIST

Acacia, Wattle
 Amyema, Mistletoe
 Banksia, Native Honeysuckle
 Billardiera scandens, Apple Berry
 Breynia oblongifolia, Coffee Bush
 Caladenia, Lady Fingers
 Carpobrotus, Pigface
 Cassytha, Devil's Twine,
 Cissus, Native Grapes Vines
 Commelina cyanea, Scurvy Weed,
 Eustrephus latifolius, Wombat Berry

Exocarpus, Native Cherry
 Ficus coronate, Sandpaper Fig
 Gahnia, Swordgrass
 Geitonoplesium cymosum, Scrambling Lily
 Glossodia, Waxlip Orchids, Ground orchids
 Glycine tabacina, Love Creeper
 Lepironia articulate, Grey Sedge,
 Lomandra longifolia, Mat-Rush
 Macadamia integrifolia, Macadamias
 Morinda jasminoides, Sweet Morinda,
 Parsonsia straminea, Common Silkpod,

Passiflora, Passionfruit
 Persoonia linearis,
 Smilax, Native Sarsaparilla
 Syzygium smithii (Acmena smithii), Common Lilly Pilly,
 Tetragonia Tetragonoides, New Zealand Spinach
 Thysanotus tuberosus, Common Fringed Lily
 Trachymene incise, Wild Parsnip
 Triglochin, Water Ribbons
 Typha, Bulrush / Cattails
 Xanthorrhoea, Grass Tree

(not all plants will be used and other native plants may be added)

COMMUNITY GARDEN

INTENDED OUTCOME

76 Rose st Woollooin (The Community Place)

SCALE 1:400 @ A3

Date: 09/02/16

Diagram

Raymond Baker